

Disney
baby

Gorgeous
Dresses

Plush
Costumes



Soft
Jersey
Rompers

travis
designs

Baby Character Outfits

Disney
baby

Baby Character Outfits

The Disney Baby Collection has gained some great momentum across EMEA and this beautifully finished range continues to please consumers and their babies.

NEW styles for 2017 include the Toy Story gang featuring Woody, Jessie and Buzz Lightyear. We all love make believe and adventures and the NEW Alice in Wonderland baby dress is a lovely addition. Minnie Mouse and Tinker Bell get their own tutu skirt sets presented on hanger cards. In the cotton jersey range, we have added a gorgeous cream & pink Bambi tutu bodysuit with a vintage style print and Eeyore now comes in a cute bodysuit.

The Disney Baby Princess range remains a best-seller, and the range of different price point options means that all retailers can access this wonderful collection.

Travis continues to work with major retailers for exclusive development and offers an in-house range for independents. For the stock range, choose from over 40 styles in this catalogue.

Add this iconic range to your selections to ensure great sales this season!

The Travis Team

Disney
ALICE
in Wonderland

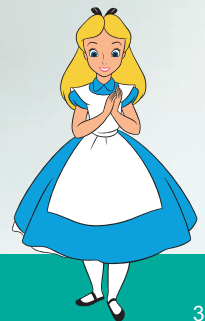
Alice Dress with Headband

This Alice in Wonderland soft blue satin dress has a mock apron with a satin trim and a signature embroidery. The pretty Peter Pan collar and the sleeve cuffs are finished with white ric-rac. To complete the style satin bloomers and a headband with bow are included.

DCAL03 / DCAL06 / DCAL12
DCAL18 / DCAL2
3-6 months / 6-12 months
12-18 months / 18-24 months / 2 years



NEW





Snow White Princess Dress

A colourful dress featuring a satin collar, trimmed with pretty ribbon detail and red flowers and a signature embroidery. Includes headband and bloomers.

DCPRSW03 / DCPRSW06 / DCPRSW012
DCPRSW18 / DCPRSW2
3-6 months / 6-12 months
12-18 months / 18-24 months / 2 years



Belle Princess Dress

A beautiful yellow and gold dress with four layers in the skirt and trimmed with delicate pink flowers and finished with an embroidery detail. Includes headband and bloomers.

DCPRBE03 / DCPRBE06 / DCPRBE012
DCPRBE18 / DCPRBE2
3-6 months / 6-12 months
12-18 months / 18-24 months / 2 years





Cinderella Princess Dress

A gorgeous blue dress trimmed with pretty bows and flowers with four layers in the skirt and finished with an embroidery detail. Includes headband and bloomers.

DCPRCIN03 / DCPRCIN06 / DCPRCIN012
DCPRCIN18 / DCPRCIN2
3-6 months / 6-12 months
12-18 months / 18-24 months / 2 years



Sleeping Beauty Princess Dress

A pretty pink dress with four layers in the skirt trimmed with delicate roses and finished with a signature embroidery detail. Includes headband and bloomers.

DCPRSB03 / DCPRSB06 / DCPRSB012
DCPRSB18 / DCPRSB2
3-6 months / 6-12 months
12-18 months / 18-24 months / 2 years





Rapunzel Princess Dress

This style includes a pretty dress trimmed with pink ribbons, delicate flowers and a four layered skirt and a signature embroidery. Includes headband and bloomers.

DCPRRAP03 / DCPRRAP06 DCPRRAP012
DCPRRAP18 / DCPRRAP2
3-6 months / 6-12 months
12-18 months / 18-24 months / 2 years



Princess Dresses
including headband and bloomers
see pages 4 - 8



Good Styling Snow White Princess Dress

This wonderful satin snow white dress, with printed character icon, has a deep blue bodice and is complemented with the signature blue and red full sleeves. The gold satin skirt is finished with dainty red bows. This style is presented folded in a bag with a hook and offers a cost effective price point.

DCPRSWG03 / DCPRSWG06
DCPRSWG012 / DCPRSWG18
3-6 months / 6-12 months
12-18 months / 18-24 months



Good Styling Belle Princess Dress

This Gold Belle satin dress has a printed Belle character icon on the bodice. There is a pretty organza overskirt and a sash shoulder detail. This style is presented folded in a bag with a hook and offers a cost effective price point.

DCPRBEG03 / DCPRBEG06
DCPRBEG012 / DCPRBEG18
3-6 months / 6-12 months
12-18 months / 18-24 months





Good Styling Cinderella Princess Dress

The Cinderella Princess Dress is in a soft blue satin with a white front panel, pretty puff sleeves and a skirt bustle. A printed character icon on the bodice adds the finishing touch to this style which comes presented folded in a bag with a hook and offers a cost effective price point.

DCPRCING03 / DCPRCING06
DCPRCING012 / DCPRCING18
3-6 months / 6-12 months
12-18 months / 18-24 months



Good Styling Sleeping Beauty Princess Dress

Sleeping Beauty is in a deep fuchsia pink satin with a printed Aurora character icon. There is a pretty organza shoulder sash and a peplum waist. This style is presented folded in a bag with a hook and offers a cost effective price point.

DCPRSBG03 / DCPRSBG06
DCPRSBG012 / DCPRSBG18
3-6 months / 6-12 months
12-18 months / 18-24 months





Good Styling Rapunzel Princess Dress

Rapunzel is a combination of purple and pink satin, featuring puff sleeves finished with ribbon and a contrast satin skirt insert. The character icon is printed on the bodice. This style is presented folded in a bag with a hook and offers a cost effective price point.

DCPRRAPG03 / DCPRRAPG06
DCPRRAPG012 / DCPRRAPG18
3-6 months / 6-12 months
12-18 months / 18-24 months



GOOD Disney Princess styling
see pages 10 & 14



Minnie Mouse Red Dress

A cute red dress with white spots featuring a satin collar and a lovely bow detail to the waist with a signature embroidery detail. The skirt has 3 layers and the style includes a headband and bloomers.

DCMIN-DRR03 / DCMIN-DRR06
DCMIN-DRR012 / DCMIN-DRR18
DCMIN-DRR2
3-6 months / 6-12 months
12-18 months / 18-24 months / 2 years



Mickey Mouse Tabard with Feature Hat

A soft, plush padded tabard with easy to fasten popper opening to the back and underneath.

Embellished with a signature embroidery. This style is fully lined for comfort and comes with a feature hat.

DCMIC-TA03 / DCMIC-TA06
DCMIC-TA012 / DCMIC-TA18
3-6 months / 6-12 months
12-18 months / 18-24 months





Red Minnie Tutu and Headband

This delightful Minnie Mouse tutu set is made up of 4 beautiful layers including a polka dot shimmer and mesh skirts tiers and a satin underskirt. The satin elasticated waistband is finished with a black Minnie satin motif. To finish off, the headband has iconic ears and a red satin bow. This style is presented on a header card.

DCMIN-TUR03-12 / DCMIN-TUR1-2
3-12 months / 1-2 years

NEW



NEW

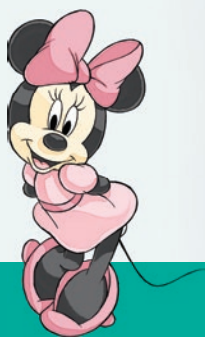


Tinker Bell Tutu with wings

An adorable Tinker Bell tutu set that comes with soft appliqued wings. The satin wings straps are elasticated and have a Velcro release.

The tutu has 4 beautiful layers including net petals, pink shimmer mesh, green net and the satin underskirt. This style is presented on a header card.

DCTIN03-12 / DCTIN1-2
3-12 months / 1-2 years





Woody 2 piece set with Hat

This costume includes denim effect trousers, a checked top with a mock cow print waistcoat, embroidered sheriff badge, cute mock belt & padded buckle. The top has Velcro release fastening at the shoulders for easy changing. Fun accessories include a red neckerchief and a soft cowboy hat.

DCWOS03 / DCWOS06 / DCWOS12
DCWOS18 / DCWOS2
3-6 months / 6-12 months
12-18 months / 18-24 months / 2 years

NEW



Jessie Dress with Hat

This charming Jessie dress in soft satin features a cute peter pan collar. The panne back panel has a Velcro fastening for easy wear. This style includes a cow print satin skirt with two full net layers and a skirt lining. The finishing touches include a mock belt and a soft cow girl hat and satin bloomers.

DCJES03 / DCJES06 / DCJES12
DCJES18 / DCJES2
3-6 months / 6-12 months
12-18 months / 18-24 months / 2 years

NEW

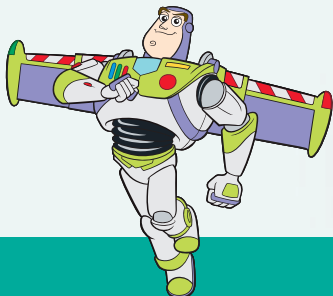




Buzz Jumpsuit with Hat

This Buzz lightyear jumpsuit has an all over print with a Velcro release centre back for easy wear. This style features a matching hat, contrasting bound cuffs and removable Velcro wings.

DCBUJU03 / DCBUJU06 / DCBUJU12
DCBUJU18 / DCBUJU2
3-6 months / 6-12 months
12-18 months / 18-24 months / 2 years



NEW additions to the range
The Jessie style includes dress, bloomers and hat
The Woody style is a 2 piece set with hat



Dory Tabard with Feature Hat

A blue and yellow soft plush padded tabard with easy popper opening to the back and underneath. This style is fully lined for comfort and comes with a fun feature hat with dorsal fin as well as fins on the hips and a detachable tail fin.

DCDOR-TA03 / DCDOR-TA06
DCDOR-TA012 / DCDOR-TA18
3-6 months / 6-12 months
12-18 months / 18-24 months

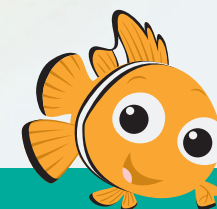


Nemo Tabard with Feature Hat

An orange and white soft plush padded tabard with easy popper opening to the back and underneath.

This style is fully lined for comfort and comes with a fun feature hat with dorsal fin, fins on the hips and big Nemo eyes on the front.

DCNE-TA03 / DCNE-TA06
DCNE-TA012 / DCNE-TA18
3-6 months / 6-12 months
12-18 months / 18-24 months



Kermit Tabard with Feature Hat

A soft, plush tabard with easy to fasten popper opening to the back and underneath. The padded front has a signature embroidery. This style is fully lined for comfort and comes with a feature hat with Velcro fastening.

DCKER-TA06 / DCKER-TA012
DCKER-TA18
6-12 months / 12-18 months
18-24 months



Piglet Tabard with Feature Hat

This soft, plush padded tabard has an easy to fasten popper opening to the back and underneath.

There is a signature embroidery to the front. This style is fully lined for comfort and comes with a feature hat with Velcro fastening.

DCPIG-TA03 / DCPIG-TA06
DCPIG-TA012 / DCPIG-TA18
3-6 months / 6-12 months
12-18 months / 18-24 months



Disney Winnie the Pooh

Winnie the Pooh Tabard with Feature Hat

A soft, plush tabard with easy to fasten popper opening to the back and underneath. The padded front has a signature embroidery. This style is fully lined for comfort and comes with a feature hat.

DCWIN-TA03 / DCWIN-TA06
DCWIN-TA012 / DCWIN-TA18
3-6 months / 6-12 months
12-18 months / 18-24 months

Disney Winnie the Pooh

Winnie The Pooh All-In-One Romper with Moulded Head

This soft, plush all-in-one style features non slip soles on the feet and an easy Velcro fastening at the centre back. There is a statement signature embroidery to the front. The fabulous moulded head is lined and has a soft Velcro fastening.

DCWIN-RPMO03 / DCWIN-RPMO06
DCWIN-RPMO012
3-6 months / 6-12 months
12-18 months



Disney Winnie the Pooh

Eeyore All-In-One Romper with Moulded Head

This plush romper is an all-in-one style with a statement moulded character head. This style features non slip soles on the feet and easy Velcro fastening at the centre back. The hat is fully lined and has a soft Velcro fastening. The style has a signature embroidery.

DCEEY-RPMO06 / DCEEYRPMO12
DCEEY-RPMO18
6-12 months / 12-18 months
18-24 months



Disney Winnie the Pooh

Tigger All-In-One Romper with Moulded Head

This all-in-one soft, plush romper with a statement moulded character head also has non slip soles on the feet and an easy Velcro fastening at the centre back. The fully lined hat has a soft Velcro fastening. The style has a signature embroidery.

DTIG-RPMO12 / DTIG-RPMO18
12-18 months / 18-24 months





101 Dalmatian, Patch All-In-One Romper with Feature Hat

This soft, plush style features non slip soles on the feet and easy Velcro fastening at the centre back. The soft bib front has a logo embroidery. The feature hat is fully lined with very cute ears and has a soft Velcro fastening.

DCPAT-RPMO03 / DCPAT-RPMO06
DCPAT-RPMO012 / DCPAT-RPMO18
3-6 months / 6-12 months
12-18 months / 18-24 months



Marie All-In-One Romper with Feature Hat

This soft, plush all-in-one style features non slip soles on the feet and easy Velcro fastening at the centre back. The soft front bib has a pretty Marie embroidery and a signature to finish. The feature hat with cute ears is fully lined with a soft Velcro fastening.

DCMAR-RPMO03
DCMAR-RPMO06
DCMAR-RPMO012
DCMAR-RPMO18
3-6 months
6-12 months
12-18 months
18-24 months



Disney Winnie the Pooh

Winnie the Pooh Jersey Bodysuit & Hat

This style is a soft cotton jersey bodysuit with a character signature, short sleeves and an easy popper fastening. The hat with ears features the embroidered character face.

DCWIN-BYS00 / DCWIN-BYS03
DCWIN-BYS06 / DCWIN-BYS09
DCWIN-BYS012 / DCWIN-BYS18
0-3 months / 3-6 months
6-9 months / 9-12 months
12-18 months / 18-24 months



Disney Winnie the Pooh

Tigger Jersey Bodysuit & Hat

A cute bodysuit style made from cotton jersey with short sleeves and an easy popper fastening. The hat features the embroidered character face and the body the embroidered signature.

DCTIG-BYS00 / DCTIG-BYS03
DCTIG-BYS06 / DCTIG-BYS09
DCTIG-BYS012 / DCTIG-BYS18
0-3 months / 3-6 months / 6-9 months
9-12 months / 12-18 months / 18-24 months



Disney Winnie the Pooh

Eeyore Jersey Bodysuit & Hat

A cute bodysuit style made from cotton jersey with short sleeves and an easy popper fastening. The hat features the embroidered character face and the body the embroidered signature.

DCEEY-BYS00 / DCEEY-BYS03
DCEEY-BYS06 / DCEEY-BYS09
DCEEY-BYS12 / DCEEY-BYS18
0-3 months / 3-6 months
6-9 months / 9-12 months
12-18 months / 18-24 months

NEW



Disney Winnie the Pooh

Piglet Jersey Bodysuit & Hat

This soft cotton jersey bodysuit has short sleeves and an easy popper fastening. The hat with ears features the embroidered character face and the body the embroidered signature.

DCPIG-BYS00 / DCPIG-BYS03
DCPIG-BYS06
DCPIG-BYS09
DCPIG-BYS012
DCPIG-BYS18
0-3 months / 3-6 months
6-9 months / 9-12 months
12-18 months / 18-24 months





Mickey Mouse Jersey Bodysuit & Hat

Soft, cotton jersey bodysuit with short sleeves and easy popper fastening. The hat features the embroidered character face and the body an embroidered character signature.

DCMIC-BYS00 / DCMIC-BYS03
DCMIC-BYS06 / DCMIC-BYS09
DCMIC-BYS012 / DCMIC-BYS18
0-3 months / 3-6 months
6-9 months / 9-12 months
12-18 months / 18-24 months



Minnie Mouse Red Jersey Bodysuit & Hat

Soft, cotton jersey bodysuit with short sleeves and easy popper fastening. This style features a pretty satin bow and printed spots. The hat features the embroidered character face and the body an embroidered character signature.

DCMIN-BYS00 / DCMIN-BYS03
DCMIN-BYS06 / DCMIN-BYS09
DCMIN-BYS012 / DCMIN-BYS18
0-3 months / 3-6 months
6-9 months / 9-12 months
12-18 months / 18-24 months

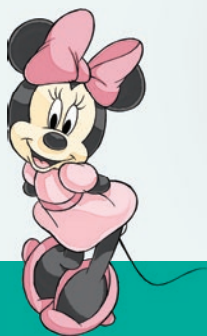




Minnie Mouse Pink Tutu with Headband

Bodysuit with Headband
This tutu style bodysuit in soft cotton jersey has a pretty satin collar detail and a soft printed mesh skirt. This style features a fun Minnie Mouse headband and the body has an embroidered character signature.

DCMIN-BYSP00 / DCMIN-BYSP03
DCMIN-BYSP06 / DCMIN-BYSP09
DCMIN-BYSP12 / DCMIN-BYSP18
0-3 months / 3-6 months
6-9 months / 9-12 months
12-18 months / 18-24 months



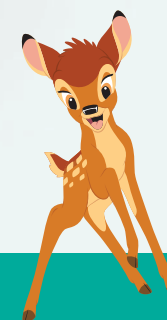
Bambi Tutu Bodysuit with Headband

This tutu style bodysuit in soft cream cotton jersey has a pretty soft printed mesh skirt. For easy wear, this style has an easy popper fastening. The final touches include a fun headband a pretty printed vintage character icon.

DCBAM-BYS00 / DCBAM-BYS03
DCBAM-BYS06 / DCBAM-BYS09
DCBAM-BYS12 / DCBAM-BYS18
0-3 months / 3-6 months / 6-9 months
9-12 months / 12-18 months / 18-24 months



NEW





101 Dalmatians, Patch Jersey Bodysuit & Hat

Soft, cotton jersey bodysuit with short sleeves and easy popper fastening. The hat features the embroidered character face and the body the character signature.

DCPAT-BYS00 / DCPAT-BYS03
DCPAT-BYS06 / DCPAT-BYS09
DCPAT-BYS012 / DCPAT-BYS18
0-3 months / 3-6 months / 6-9 months
9-12 months / 12-18 months / 18-24 months



Tigger Jersey Romper with Hood

This lightweight cotton jersey romper has an easy popper fastening and embroidered design to the front of the body. The hood features an embroidered character face.

DCTIG-RJ00 / DCTIG-RJ03
DCTIG-RJ06 / DCTIG-RJ09
0-3 months / 3-6 months
6-9 months / 9-12 months



Disney Winnie the Pooh

Eeyore Jersey Romper with Hood

Lightweight cotton jersey romper with an easy popper fastening and embroidered character signature to the front of the body. The hood features an embroidered character face with a tuft of fur. Only age 12-18 months have no feet. All smaller sizes come with integral feet.

DCEEY-RJ03 / DCEEY-RJ06
DCEEY-RJ09
3-6 months / 6-9 months
9-12 months



Disney Winnie the Pooh

Winnie the Pooh Jersey Romper with Hood

Lightweight cotton jersey romper with easy popper fastening and embroidered design to the front of the body. The hood features an embroidered character face. Only age 12-18 months have no feet. All smaller sizes come with integral feet.

DCWIN-RJ00 / DCWIN-RJ03
DCWIN-RJ06 / DCWIN-RJ09
0-3 months / 3-6 months
6-9 months / 9-12 months





Mickey Mouse Jersey Romper with Hood

Lightweight cotton jersey romper with an easy popper fastening and fun printed Mickey Mouse design to the front of the body. The hood features a character face and the Mickey signature is on the romper leg. The 12-18 months size does not have integral feet.

DCMIC-RJ00 / DCMIC-RJ03 / DCMIC-RJ06
DCMIC-RJ09 / DCMIC-RJ012
0-3 months / 3-6 months / 6-9 months
9-12 months / 12-18 months



Minnie Mouse Jersey Romper with Hood

Lightweight cotton jersey romper with easy popper fastening and fun printed Minnie Mouse design to the front of the body. The hood features a character face and the Minnie signature is on the romper leg. The 12-18 months size does not have integral feet.

DCMIN-RJ00 / DCMIN-RJ03
DCMIN-RJ06 / DCMIN-RJ09
DCMIN-RJ012
0-3 months / 3-6 months
6-9 months / 9-12 months
12-18 months



Disney Winnie the Pooh

Winnie the Pooh Vintage Romper with Feature Hat

This soft, yellow vintage cord plush style features non slip soles on the feet and an easy Velcro centre back fastening. The red knitted front panel and vintage highlights add lovely detail. The feature hat is gently elasticated for easy wear.

DCWINVRP03 / DCWINVRP06
DCWINVRP012 / DCWINVRP18
3-6 months / 6-12 months
12-18 months / 18-24 months



Disney Winnie the Pooh

Eeyore Vintage Romper with Feature Hat

This soft, grey vintage waffle plush style features non slip soles on the feet and an easy Velcro centre back fastening. The soft blue knitted front panel with a signature embroidery and vintage highlights add lovely detail. The feature hat is gently elasticated for easy wear.

DCEEYVRP03 / DCEEYVRP06
DCEEYVRP012 / DCEEYVRP18
3-6 months / 6-12 months
12-18 months / 18-24 months





Piglet Vintage Romper with Feature Hat

This soft, pink vintage textured plush style features non slip soles on the feet and an easy Velcro centre back fastening. The pink knitted front panel with a signature embroidery and vintage highlights add lovely detail. The feature hat is gently elasticated for easy wear.

DCPIGVRP03 / DCPIGVRP06
DCPIGVRP012 / DCPIGVRP18
3-6 months / 6-12 months
12-18 months / 18-24 months



Useful Information

Washing

This Disney Baby range is all machine washable on a 30°C wash.



Testing- Dress up

The plush rompers and tabards, the Minnie red dress and the Princess, Toy Story and tutu set ranges are classed as toys and carry the CE mark. They adhere to the Toy Directive and are tested to European Standard EN71. Products supplied outside the EU will need to be tested to meet relevant local market requirements.

Testing – Apparel

The cotton jersey bodysuits and jersey rompers are classed as apparel and tested accordingly (wash and safety tests). Products supplied outside the EU will need to be tested to meet relevant local market requirements.

Packaging

The new tutu sets are presented on a character themed header card. The 'Good' style Princesses are supplied in convenient packaging for easy merchandising in-store. All other styles are supplied with a branded hanger and swing tag and are individually bagged.

Jersey Ranges

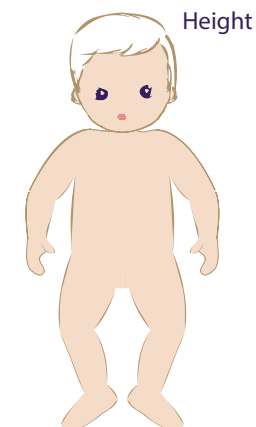
Age	Height (cm)	Weight (kg)
0-3m	60-64	4-6
3-6m	64-72	6-8
6-9m	72-76	8-9
9-12m	76-80	9-10
12-18m	80-86	10-12
18-24m	86-92	11-14

Plush Range, Toy Story & Princess Range

Age	Height (cm)	Weight (kg)
3-6m	64-72	6-8
6-12m	72-80	8-10
12-18m	80-86	9-12
18-24m	86-92	11-14
2y (where applicable)	95	13-15

Tutu Skirt Sets

Age	Height (cm)	Weight (kg)
3-12m	64-80	6-10
1-2y	80-92	10-14



Exclusive lines for volume orders

Travis Designs offer a full design, quality and manufacturing service. We can offer exclusive development for major retailers for DTR or under the Travis Disney License. Manufacturing partners are based in China, Madagascar and Eastern Europe.



Styles, fabrics and costumes in this range may vary subject to availability. All designs in this catalogue remain the property of Travis Designs. The licenses in these age groups are only available from Travis Designs Limited.

© Disney
© Disney/Pixar
© Disney, Based on the "Winnie the Pooh" works
by A.A. Milne and E.H. Shepard



©Disney/Pixar

Head Office – UK

Travis Designs Limited
Northbridge Road, Berkhamsted
Herts, HP4 1EH
United Kingdom
Tel: +44 (0) 1442 289898
Fax: +44 (0) 1442 289897
Email: sales@travis.co.uk
www.travis.co.uk

Distributors

Benelux (Belgium, Holland, Luxembourg)

JPM Toys sprl
Woluwe Industry Park, Tollaen 83
1932 Sint-Stevens-Woluwe
Belgium
Contact: Renaud Maisonny
Tel: +32 (0) 2 742 95 29
Email: info@jpmtoys.com
www.jpmtoys.com

Italy

Officine FA,
Via Andreis, 18 int. 18/B, 10152 Torino
Italy
Contact: Cesare Ferrarotti
Tel: +39 3493188633
Email: commerciale@officinefa.it
www.officinefa.it

Scandinavia

AM Leg A/S
Smedesvinget 8, DK – 6880 Tarm
Denmark
Contact: Poul Erik Pedersen
Tel: +45 9737 1020
Email: pep@amleg.dk
www.amleg.dk

Greece

Arapis Yannis
198, Kifisias Ave & Adrianou 2
15451 N.Psychiko
Greece
Tel: 0030 2106453721, 0030 2106624089
Fax: 0030 2106624042
gaitanaki@gaitanaki.gr

France, Germany, Austria & Switzerland

Amscan Europe GmbH
Postfach (PO Box) 1522
D-73223 Kirchheim/Teck
Germany
Tel: +49 (0) 70 21-92 61 40
Fax: +49 (0) 70 21-92 61 08
Email: sales@eu.amscan.com
www.amscan-europe.com

Middle East

Party Centre LLC
P.O. Box 36898, Dubai
United Arab Emirates
Tel: +9714 297 9125
Fax: +9714 297 9121
www.mypartycentre.com

Spain

Liragram Espana
CIF B-83513481, Calle Rio Ter 7
Poligono el Nogal
28110 Algete, Madrid
Spain
Tel: +91 628 92 07
Fax: +91 628 92 08
www.liragram.com

travis
designs