

Disney
baby

Themed
Apparel

Gorgeous
Dress up

Plush
Costumes



travis
designs

Baby Character Outfits



Baby Character Outfits

With great new lines and increased sales across Europe, Middle East and Australia, this beautiful brand continues to please retailers and customers alike.

The NEW Incredibles film is just around the corner, making the Jack-Jack cotton jersey character romper a great addition to the 2018 range. With the success of the Toy Story gang introduced last year, we have now added Rex the Dinosaur in a cotton jersey romper style.

A brand NEW Dress up Pinafore range has been launched for easy wear at a great price point, the launch characters include: Minnie Mouse, Snow White and Sleeping Beauty.

Marie from the Aristocats franchise gets her very own tutu skirt with headband presented on a cute hanger card.

The Disney Baby Princess range remains a best-seller, and a number of different price point options means that all retailers can access this wonderful collection. For 2018, we are delighted to add a gorgeous Ariel – Little Mermaid tutu style dress.

Travis continues to work with major retailers for exclusive development and offers an in-house range for independents. For the stock range, choose from over 30 styles in this catalogue.

Add this iconic range to your selections to ensure great sales this season!

The Travis Team

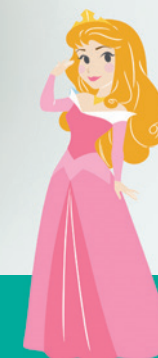


Sleeping Beauty Princess Dress

A pretty pink dress with shoulder sash and peplum, four layers in the skirt trimmed with delicate roses and finished with a signature embroidery detail. Includes headband and bloomers.

DCPRSB03 / DCPRSB06 / DCPRSB012
DCPRSB18 / DCPRSB2
3-6 months / 6-12 months
12-18 months / 18-24 months / 2 years

[Dress Up](#)





Snow White Princess Dress

A colourful dress featuring a satin collar, trimmed with pretty ribbon detail and red flowers and a signature embroidery. The layered full skirt is edged with character ribbon. Includes headband and bloomers.

DCPRSW03 / DCPRSW06 / DCPRSW012
DCPRSW18 / DCPRSW2
3-6 months / 6-12 months
12-18 months / 18-24 months / 2 years

[Dress Up](#)



Belle Princess Dress

A beautiful yellow and gold dress with a glistening organza shoulder sash. The skirt has 4 layers of organza, tulle and satin. The bodice is trimmed with delicate pink flowers and finished with an embroidery detail. Includes headband and bloomers.

DCPRBE03 / DCPRBE06 / DCPRBE012
DCPRBE18 / DCPRBE2
3-6 months / 6-12 months
12-18 months / 18-24 months / 2 years

[Dress Up](#)





Cinderella Princess Dress

A gorgeous blue dress trimmed with pretty bows and flowers. The full skirt is made of layers of organza tulle and satin. The bodice is finished with an embroidery detail. Includes headband and bloomers.

DCPRCIN03 / DCPRCIN06 / DCPRCIN012
DCPRCIN18 / DCPRCIN2
3-6 months / 6-12 months
12-18 months / 18-24 months / 2 years

Dress Up

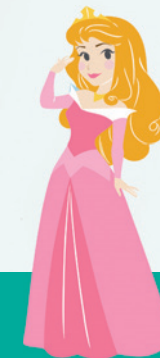


Rapunzel Princess Dress

This pretty dress with ornate puff sleeves has a full skirt made of 4 layers of organza tulle and satin. Finishing touches includes pink ribbon, delicate flowers and a signature embroidery. Includes headband and bloomers.

DCPRRAP03 / DCPRRAP06
DCPRRAP012 DCPRRAP18 /
DCPRRAP2
3-6 months / 6-12 months
12-18 months / 18-24 months / 2 years

Dress Up



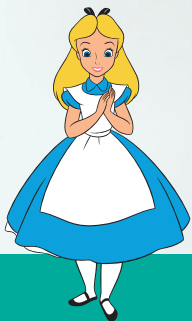
Disney ALICE in Wonderland

Alice Dress with Headband

This Alice in Wonderland soft blue satin dress has a mock apron with a satin trim and a signature embroidery. The pretty Peter Pan collar and the sleeve cuffs are finished with white ric-rac. To complete the style satin bloomers and a headband with bow are included.

DCAL03 / DCAL06 / DCAL12
DCAL18 / DCAL2
3-6 months / 6-12 months
12-18 months / 18-24 months / 2 years

Dress Up



Disney THE LITTLE MERMAID

Ariel Tutu Dress with Headband

Shimmering fabrics and layers of soft gathered tulle create this soft, pretty Mermaid costume. The glistening bodice has an Ariel embroidery on the front and the full tutu skirt is edged in lilac. For easy wear, this style has a Velcro fastening. The final touch includes a headband with bow trim.

NEW

Dress Up



DCAR-BYS03 / DCAR-BYS06
DCAR-BYS12 / DCAR-BYS18
3-6 months / 6-12 months
12-18 months / 18-24 months





Good Styling Snow White Princess Dress

This wonderful satin snow white dress, with printed character icon, has a deep blue bodice and is complemented with the signature blue and red full sleeves. The gold satin skirt is finished with dainty red bows. This style is presented folded in a bag with a hook and offers a cost effective price point.

DCPRSWG03 / DCPRSWG06
DCPRSWG012 / DCPRSWG18
DCPRSWG2
3-6 months / 6-12 months
12-18 months / 18-24 months
2 years

Dress Up



Good Styling Belle Princess Dress

This Gold Belle satin dress has a printed Belle character icon on the bodice. There is a pretty organza overskirt and a sash shoulder detail. This style is presented folded in a bag with a hook and offers a cost effective price point.

DCPRBEG03 / DCPRBEG06
DCPRBEG012 / DCPRBEG18
DCPRBEG2
3-6 months / 6-12 months
12-18 months / 18-24 months
2 years

Dress Up





Good Styling Cinderella Princess Dress

The Cinderella Princess Dress is in a soft blue satin with a white front panel, pretty puff sleeves and a skirt bustle. A printed character icon on the bodice adds the finishing touch to this style which comes presented folded in a bag with a hook and offers a cost effective price point.

DCPRCING03 / DCPRCING06
DCPRCING012 / DCPRCING18
DCPRCING2
3-6 months / 6-12 months
12-18 months / 18-24 months
2 years

Dress Up



Good Styling Sleeping Beauty Princess Dress

Sleeping Beauty is in a deep fuchsia pink satin with a printed Aurora character icon. There is a pretty organza shoulder sash and a peplum waist. This style is presented folded in a bag with a hook and offers a cost effective price point.

DCPRSBG03 / DCPRSBG06
DCPRSBG012 / DCPRSBG18
3-6 months / 6-12 months
12-18 months / 18-24 months

Dress Up





Good Styling Rapunzel Princess Dress

Rapunzel is a combination of purple and pink satin, featuring puff sleeves finished with ribbon and a contrast satin skirt insert. The character icon is printed on the bodice. This style is presented folded in a bag with a hook and offers a cost effective price point.

DCPRRAPG03 / DCPRRAPG06
DCPRRAPG012 / DCPRRAPG18
DCPRRAPG2
3-6 months / 6-12 months
12-18 months / 18-24 months
2 years

Dress Up



GOOD Disney Princess styling
see pages 10 - 14



Snow White Dress up Pinafore & Headband

A perfect dressing up solution for babies. Just pop the Dress up Pinafore over their clothes with the easy side Velcro fastening. This style is made from soft touch satin with pretty trims and an iconic Snow White print. To complete the look, an elasticated headband with Velcro release is included. Presented on a header card.

DCSWPIN03-12 / DCSWPIN1-2
3-12 months / 1-2 years

Dress Up



NEW

NEW

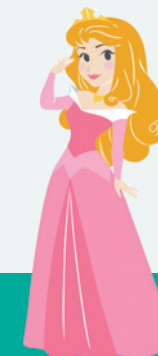


Sleeping Beauty Dress up Pinafore & Headband

This easy and cost-effective style is a simple dress up solution for any Baby Princess. Just pop the Dress up Pinafore over their clothes. The easy side Velcro fastening means no fuss. The soft touch satin, pretty trims and iconic Sleeping Beauty print completes the look. The pink matching headband has a Velcro release. Presented on a header card.

DCSBPIN03-12 / DCSBPIN1-2
3-12 months / 1-2 years

Dress Up





Minnie Mouse Red Dress

A cute red dress with white spots featuring a satin collar and a lovely bow detail to the waist with a signature embroidery detail. The skirt has 3 layers and the style includes a headband and bloomers.

DCMIN-DRR03 / DCMIN-DRR06
DCMIN-DRR012 / DCMIN-DRR18
DCMIN-DRR2
3-6 months / 6-12 months
12-18 months / 18-24 months / 2 years

[Dress Up](#)



Mickey Mouse Tabard with Feature Hat

A soft, plush padded tabard with easy to fasten popper opening to the back and underneath.

Embellished with a signature embroidery. This style is fully lined for comfort and comes with a feature hat.

DCMIC-TA03 / DCMIC-TA06
DCMIC-TA012 / DCMIC-TA18
3-6 months / 6-12 months
12-18 months / 18-24 months

[Dress Up](#)





Minnie Mouse Dress up Pinafore & Headband

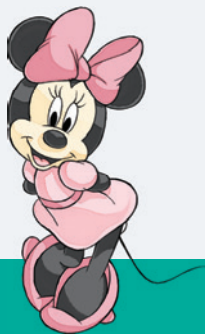
The perfect dress up for a quick and easy solution. This cost effective style is made from soft touch satin and is printed with the iconic Minnie spots and finished with appliqué buttons and character print. The side Velcro fastening makes it easy to wear. The matching headband with bow has a Velcro release.

Presented on a hanger card.

DCMINPIN03-12 / DCMINPIN1-2
3-12 months / 1-2 years

Dress Up

NEW



Red Minnie Tutu and Headband

This delightful Minnie Mouse tutu set is made up of 4 beautiful layers including a polka dot shimmer and mesh skirts tiers and a satin underskirt. The satin elasticated waistband is finished with a black Minnie satin motif. To finish off, the headband has iconic ears and a red satin bow. This style is presented on a header card.

DCMIN-TUR03-12 / DCMIN-TUR1-2
3-12 months / 1-2 years

Dress Up





Marie Tutu and Headband

This cute Marie tutu set includes a satin lined tutu skirt made up of 3 soft net layers in pink and white including a pretty pink polka dot layer and a Marie signature embroidery. The skirt hem is edged with a signature ribbon. To complete the set, the white velour headband has cute cat ears and pink highlights. This style is presented on a header card.

DCMAR-TU03-12 / DCMAR-TU1-2
3-12 months / 1-2 years

[Dress Up](#)

NEW



Tinker Bell Tutu with wings

An adorable Tinker Bell tutu set that comes with soft appliqued wings. The satin wings straps are elasticated and have a Velcro release.

The tutu has 4 beautiful layers including net petals, pink shimmer mesh, green net and the satin underskirt. This style is presented on a header card.

DCTIN03-12 / DCTIN1-2
3-12 months / 1-2 years

[Dress Up](#)





Woody 3 piece set with Hat

This costume includes denim effect trousers, a checked top with a mock cow print waistcoat, embroidered sheriff badge, cute mock belt & padded buckle. The top has Velcro release fastening at the shoulders for easy changing. Fun accessories include a red neckerchief and a soft cowboy hat.

DCWOS03 / DCWOS06 / DCWOS12
DCWOS18 / DCWOS2
3-6 months / 6-12 months
12-18 months / 18-24 months / 2 years

[Dress Up](#)



Jessie Dress with Hat

This charming Jessie dress in soft satin features a cute peter pan collar. The panne back panel has a Velcro fastening for easy wear. This style includes a cow print satin skirt with two full net layers and a skirt lining. The finishing touches include a mock belt and a soft cow girl hat and satin bloomers.

DCJES03 / DCJES06 / DCJES12
DCJES18 / DCJES2
3-6 months / 6-12 months
12-18 months / 18-24 months / 2 years

[Dress Up](#)



Buzz Jumpsuit with Hat

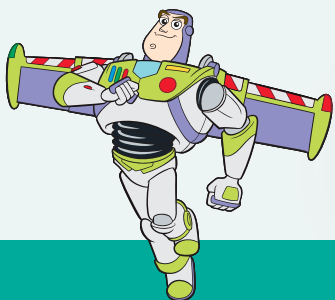
This Buzz lightyear jumpsuit has an all over print with a Velcro release centre back for easy wear. This style features a matching hat, contrasting bound cuffs and removable Velcro wings.

DCBUJU03 / DCBUJU06 / DCBUJU12
DCBUJU18 / DCBUJU2
3-6 months / 6-12 months
12-18 months / 18-24 months / 2 years

Dress Up



New to the range, don't forget Rex on page 44





Dory Tabard with Feature Hat

A blue and yellow soft plush padded tabard with easy popper opening to the back and underneath. This style is fully lined for comfort and comes with a fun feature hat with dorsal fin as well as fins on the hips and a detachable tail fin.

DCDOR-TA03 / DCDOR-TA06
DCDOR-TA012 / DCDOR-TA18
3-6 months / 6-12 months
12-18 months / 18-24 months

Dress Up



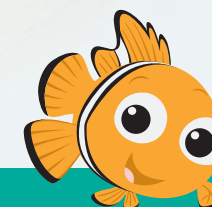
Nemo Tabard with Feature Hat

An orange and white soft plush padded tabard with easy popper opening to the back and underneath.

This style is fully lined for comfort and comes with a fun feature hat with dorsal fin, fins on the hips and big Nemo eyes on the front.

DCNE-TA03 / DCNE-TA06
DCNE-TA012 / DCNE-TA18
3-6 months / 6-12 months
12-18 months / 18-24 months

Dress Up



Disney Winnie the Pooh

Winnie the Pooh Tabard with Feature Hat

A soft, plush tabard with easy to fasten popper opening to the back and underneath. The padded front has a signature embroidery. This style is fully lined for comfort and comes with a feature hat.

DCWIN-TA03 / DCWIN-TA06
DCWIN-TA012 / DCWIN-TA18
3-6 months / 6-12 months
12-18 months / 18-24 months

[Dress Up](#)



Disney Winnie the Pooh

Piglet Tabard with Feature Hat

This soft, plush padded tabard has an easy to fasten popper opening to the back and underneath.

There is a signature embroidery to the front. This style is fully lined for comfort and comes with a feature hat with Velcro fastening.

DCPIG-TA03 / DCPIG-TA06
DCPIG-TA012 / DCPIG-TA18
3-6 months / 6-12 months
12-18 months / 18-24 months

[Dress Up](#)





101 Dalmatian, Patch All-In-One Romper with Feature Hat

This soft, plush style features non slip soles on the feet and easy Velcro fastening at the centre back. The soft bib front has a logo embroidery. The feature hat is fully lined with very cute ears and has a soft Velcro fastening.

DCPAT-RPMO03 / DCPAT-RPMO06
DCPAT-RPMO12 / DCPAT-RPMO18
3-6 months / 6-12 months
12-18 months / 18-24 months

[Dress Up](#)



Marie All-In-One Romper with Feature Hat

This soft, plush all-in-one style features non slip soles on the feet and easy Velcro fastening at the centre back. The soft front bib has a pretty Marie embroidery and a signature to finish. The feature hat with cute ears is fully lined with a soft Velcro fastening.

DCMAR-RPMO03
DCMAR-RPMO06
DCMAR-RPMO12
DCMAR-RPMO18
3-6 months
6-12 months
12-18 months
18-24 months

[Dress Up](#)



Disney Winnie the Pooh

Winnie the Pooh Jersey Bodysuit & Hat

This style is a soft cotton jersey bodysuit with a character signature, short sleeves and an easy popper fastening. The hat with ears features the embroidered character face.

DCWIN-BYS00 / DCWIN-BYS03
DCWIN-BYS06 / DCWIN-BYS09
DCWIN-BYS012 / DCWIN-BYS18
0-3 months / 3-6 months
6-9 months / 9-12 months
12-18 months / 18-24 months

Apparel



Disney Winnie the Pooh

Tigger Jersey Bodysuit & Hat

A cute bodysuit style made from cotton jersey with short sleeves and an easy popper fastening. The hat features the embroidered character face and the body includes an embroidered signature.

DCTIG-BYS00 / DCTIG-BYS03
DCTIG-BYS06 / DCTIG-BYS09
DCTIG-BYS012 / DCTIG-BYS18
0-3 months / 3-6 months / 6-9 months
9-12 months / 12-18 months / 18-24 months

Apparel



Disney Winnie the Pooh

Eeyore Jersey Bodysuit & Hat

A cute bodysuit style made from cotton jersey with short sleeves and an easy popper fastening. The hat features the embroidered character face and the body includes an embroidered signature.

DCEEY-BYS00 / DCEEY-BYS03
DCEEY-BYS06 / DCEEY-BYS09
DCEEY-BYS12 / DCEEY-BYS18
0-3 months / 3-6 months
6-9 months / 9-12 months
12-18 months / 18-24 months

Apparel



Disney Winnie the Pooh

Piglet Jersey Bodysuit & Hat

This soft cotton jersey bodysuit has short sleeves and an easy popper fastening. The hat with ears features the embroidered character face and the body includes an embroidered signature.

DCPIG-BYS00 / DCPIG-BYS03
DCPIG-BYS06
DCPIG-BYS09
DCPIG-BYS012
DCPIG-BYS18
0-3 months / 3-6 months
6-9 months / 9-12 months
12-18 months / 18-24 months

Apparel





Mickey Mouse Jersey Bodysuit & Hat

Soft, cotton jersey bodysuit with short sleeves and easy popper fastening. The hat features the embroidered character face and the body includes an embroidered signature.

DCMIC-BYS00 / DCMIC-BYS03
DCMIC-BYS06 / DCMIC-BYS09
DCMIC-BYS012 / DCMIC-BYS18
0-3 months / 3-6 months
6-9 months / 9-12 months
12-18 months / 18-24 months

Apparel



Minnie Mouse Red Jersey Bodysuit & Hat

Soft, cotton jersey bodysuit with short sleeves and easy popper fastening. This style features a pretty satin bow and printed spots. The hat features the embroidered character face and the body includes an embroidered signature.

DCMIN-BYS00 / DCMIN-BYS03
DCMIN-BYS06 / DCMIN-BYS09
DCMIN-BYS012 / DCMIN-BYS18
0-3 months / 3-6 months
6-9 months / 9-12 months
12-18 months / 18-24 months

Apparel



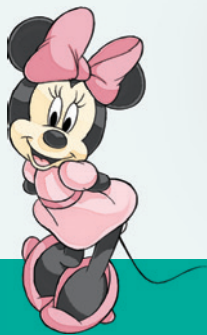


Minnie Mouse Pink Tutu with Headband

Bodysuit with Headband
This tutu style bodysuit in soft cotton jersey has a pretty satin collar detail and a soft printed mesh skirt. This style features a fun Minnie Mouse headband and the body has an embroidered character signature.

DCMIN-BYSP00 / DCMIN-BYSP03
DCMIN-BYSP06 / DCMIN-BYSP09
DCMIN-BYSP12 / DCMIN-BYSP18
0-3 months / 3-6 months
6-9 months / 9-12 months
12-18 months / 18-24 months

Apparel

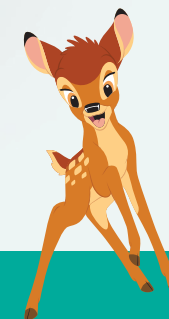


Bambi Tutu Bodysuit with Headband

This tutu style bodysuit in soft cream cotton jersey has a pretty soft printed mesh skirt. For easy wear, this style has an easy popper fastening. The final touches include a fun headband a pretty printed vintage character icon.

DCBAM-BYS00 / DCBAM-BYS03
DCBAM-BYS06 / DCBAM-BYS09
DCBAM-BYS12 / DCBAM-BYS18
0-3 months / 3-6 months / 6-9 months
9-12 months / 12-18 months / 18-24 months

Apparel





101 Dalmatians, Patch Jersey Bodysuit & Hat

Soft, cotton jersey bodysuit with short sleeves and easy popper fastening. The hat features the embroidered character face and the body includes an embroidered signature.

DCPAT-BYS00 / DCPAT-BYS03
DCPAT-BYS06 / DCPAT-BYS09
DCPAT-BYS012 / DCPAT-BYS18
0-3 months / 3-6 months / 6-9 months
9-12 months / 12-18 months / 18-24 months

Apparel



NEW

Disney · PIXAR



Incredibles Jack Jack Jersey Romper with Hood

This cute Jack-Jack style is the perfect apparel character outfit. The soft cotton jersey romper with long sleeves and feet has an easy popper fastening. The hood is themed to the character with an effective mock eye mask and the front body bears the iconic Incredibles symbol. Super Powers not included!

DCINC-RJ00 / DCINC-RJ03
DCINC-RJ06 / DCINC-RJ09
0-3 months / 3-6 months
6-9 months / 9-12 months

Apparel





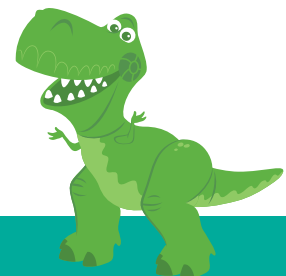
Rex Jersey Romper with Hood

A great addition to the Toy Story range! This apparel romper includes a Rex character body print and large padded tail. The hood features a soft, lightly padded, printed face with soft jersey teeth. This long sleeve, green cotton romper has a popper fastening for easy wear.

DCREX-RJ00 / DCREX-RJ03
DCREX-RJ06 / DCREX-RJ09
0-3 months / 3-6 months
6-9 months / 9-12 months

For the rest of the Toy Story collection see pages 24-27

Apparel



NEW



Winnie the Pooh Jersey Romper with Hood

Lightweight cotton jersey romper with easy popper fastening and embroidered design to the front of the body. The hood features an embroidered character face.

DCWIN-RJ00 / DCWIN-RJ03
DCWIN-RJ06 / DCWIN-RJ09
0-3 months / 3-6 months
6-9 months / 9-12 months

Apparel



©Disney. Based on the "Winnie the Pooh" works by A.A. Milne and E.H. Shepard



Mickey Mouse Jersey Romper with Hood

Lightweight cotton jersey romper with an easy popper fastening and fun printed Mickey Mouse design to the front of the body. The hood features a character face and the Mickey signature is on the romper leg. The 12-18 months size does not have integral feet.

DCMIC-RJ00 / DCMIC-RJ03 / DCMIC-RJ06
DCMIC-RJ09 / DCMIC-RJ012
0-3 months / 3-6 months / 6-9 months
9-12 months / 12-18 months

Apparel



Minnie Mouse Jersey Romper with Hood

Lightweight cotton jersey romper with easy popper fastening and fun printed Minnie Mouse design to the front of the body. The hood features a character face and the Minnie signature is on the romper leg. The 12-18 months size does not have integral feet.

DCMIN-RJ00 / DCMIN-RJ03
DCMIN-RJ06 / DCMIN-RJ09
DCMIN-RJ012
0-3 months / 3-6 months
6-9 months / 9-12 months
12-18 months

Apparel



Disney Winnie the Pooh

Winnie the Pooh Vintage Romper with Feature Hat

This soft, yellow vintage cord plush style features non slip soles on the feet and an easy Velcro centre back fastening. The red knitted front panel and vintage highlights add lovely detail. The feature hat is gently elasticated for easy wear.

DCWINVRP03 / DCWINVRP06
DCWINVRP12 / DCWINVRP18
3-6 months / 6-12 months
12-18 months / 18-24 months

[Dress Up](#)



Disney Winnie the Pooh

Eeyore Vintage Romper with Feature Hat

This soft, grey vintage waffle plush style features non slip soles on the feet and an easy Velcro centre back fastening. The soft blue knitted front panel with a signature embroidery and vintage highlights add lovely detail. The feature hat is gently elasticated for easy wear.

DCEEYVRP03 / DCEEYVRP06
DCEEYVRP12 / DCEEYVRP18
3-6 months / 6-12 months
12-18 months / 18-24 months

[Dress Up](#)





Piglet Vintage Romper with Feature Hat

This soft, pink vintage textured plush style features non slip soles on the feet and an easy Velcro centre back fastening. The pink knitted front panel with a signature embroidery and vintage highlights add lovely detail. The feature hat is gently elasticated for easy wear.

DCPIGVRP03 / DCPIGVRP06
DCPIGVRP012 / DCPIGVRP18
3-6 months / 6-12 months
12-18 months / 18-24 months

Dress Up



Useful Information

TESTING- Dress up Dress Up

All items featuring the "Dress Up" icon are classed as toys and carry the CE Mark. These items adhere to the Toy Safety Directive and are tested to European Standard EN71. Products supplied outside the EU will need to be tested to meet relevant local market requirements.

TESTING – Apparel Apparel

The cotton jersey bodysuits and jersey rompers, which feature the "Apparel" icon, are classed as daywear apparel and tested accordingly (wash and safety tests). Products supplied outside the EU will need to be tested to meet relevant local market requirements.

Washing

This Disney Baby range is all machine washable on a 30°C wash.



Additional Safety Note

The items in this Disney Baby range are not to be worn as sleepwear. Parents/guardians should not allow their child to sleep in these items.

Packaging

The Dress up Pinafore and tutu sets are presented on a character themed header card. The 'Good' style Princesses are supplied in convenient packaging for easy merchandising in-store. All other styles are supplied with a branded hanger and swing tag and are individually bagged.

Jersey Ranges

Age	Height (cm)	Weight (kg)
0-3m	60-64	4-6
3-6m	64-72	6-8
6-9m	72-76	8-9
9-12m	76-80	9-10
12-18m	80-86	10-12
18-24m	86-92	11-14

Dress up Pinafore & Tutu Skirt Set

Age	Height (cm)	Weight (kg)
3-12m	64-80	6-10
1-2y	80-92	10-14

Plush Range, Toy Story & Princess Range

Age	Height (cm)	Weight (kg)
3-6m	64-72	6-8
6-12m	72-80	8-10
12-18m	80-86	9-12
18-24m	86-92	11-14
2y (where applicable)	95	13-15



Exclusive lines for volume orders

Travis Designs offer a full design, quality and manufacturing service. We can offer exclusive development for major retailers for DTR or under the Travis Disney License.

Manufacturing partners are based in China, Madagascar and Eastern Europe.



Styles, fabrics and costumes in this range may vary subject to availability.

All designs in this catalogue remain the property of Travis Designs/AmScan International Limited

The licenses in these age groups are only available from Travis Designs/AmScan International Limited

© Disney

© Disney/Pixar

© Disney, Based on the "Winnie the Pooh" works
by A.A. Milne and E.H. Shepard



©Disney/Pixar

Head Office:

AmScan International Limited
Brudenell Drive, Brinklow
Milton Keynes, MK10 0DA
Tel: +44 (0) 1908 288500
email: sales@travis.co.uk
www.travis.co.uk

Distributors

Benelux (Belgium, Holland, Luxembourg)
JPM Toys sprl,
Woluwe Industry Park,
Tollaan 83,
1932 Sint-Stevens-Woluwe,
Belgium
Contact: Renaud Maisonnay
Tel: +32 (0) 2 742 95 29
Email: info@jpmtoys.com
www.jpmtoys.com

France

Produits de Marc
24 rue Gerald
92270 Bois Colombes
France
Contact: Marc Denarnaud
Tel: + 33 (1) 39 28 79 51
Fax: +33(0) 970 32 45 20
Email: produitsdemarc@wanadoo.fr
www.axes-children.fr

Germany/France/Austria

AmScan Europe GmbH
Postfach (PO Box) 1522
D-73223 Kirchheim/Teck Germany
Tel: +49 70 21 92 61 40
Fax: +49 70 21 92 61 08
Email: sales@eu.amscan.com
www.amscan-europe.com

amscan®

Greece/Cyprus

Gaitanaki
198, Kifisias Ave & Adrianou 2
15451 Neo Psychiko
Greece
Contact: Yannis Arapis
tel +30 210 6453721, +30 210 6624089
fax +30 210 6624042
email: gaitanaki@gaitanaki.gr
www.gaitanaki.gr

Italy

Officine FA
Officine FA c/o One World
Via Umbria, 27/C
10099 San Mauro Torinese (Torino)
Italy
Tel: +39 3493188633
Email: commerciale@officinefa.it
www.officinefa.it

Scandinavia

(Denmark, Sweden, Norway, Finland)
AM Leg A/S
Smedesvinget 8,
DK - 6880 Tårn
Denmark
Contact: Poul Erik Pedersen
Tel: +45 9737 1020
Email: pep@amleg.dk
www.amleg.dk

Spain

Old Teddy's Company, S.L.
Can Perich, 18 Nave E
Poligon Ind. Can Clapers
08181 Sentmenat
Spain
Contact: Elisenda Alabern
Tel: +34 937 154 752, +34 937 154 753
Email: info@olddeddys.com

Spain

Liragram Spain
Calle Rio Ter número 7
Poligono el Nogal
28110 Algete
Madrid
España
Contact: Mayte Lira
Tel: +34 91 628.91.02
Fax: +91 628.92.08
Email: liragram@liragram.com
www.liragram.com

Saudi Arabia, Kuwait, Bahrain, Qatar, United Arab Emirates, Oman

Party Centre LLC
P.O. Box 36898
Dubai, United Arab Emirates
Tel: +9714 297 9125
Fax: +9714 297 9121
www.mypartycentre.com

Switzerland

Robert Kuhn AG
Poststrasse 4, 8634 Hombrechtikon
Contact: Herr Roger Kung
Tel: +41 55 264 1800
Fax: +41 55 264 1804
Email: r.kuhn@bluewin.ch
www.robertkuhn.ch

Australia/New Zealand

AmScan Asia Pacific
39/5-7 Ingleswood Place,
Baulkham Hills
NSW 2153, Sydney,
Australia
Tel: +61 2 8834 0900
Email: sales@amscan.com.au