

The background is a light green with a subtle radial pattern. Overlaid on this are several decorative elements: two large sets of concentric circles in blue, yellow, orange, and magenta; a metallic, iridescent shell with a sharp point; and various white swirls and circles of different sizes. The title 'Book of Inspiration' is written in a bold, black, sans-serif font with a white outline, positioned in the lower right quadrant.

# Book of Inspiration

**amscan®**

### Decorator Foil Specifications

<b>15" Curve</b>	<b>Unvalved</b>	<b>Air Fill</b>
<b>19" Curve</b>	<b>Valved</b>	<b>Air Fill</b>
<b>28" Curve</b>	<b>Valved</b>	<b>Air Fill*</b>
<b>36" Curve</b>	<b>Valved</b>	<b>Air or Helium Fill</b>
<b>42" Curve</b>	<b>Valved</b>	<b>Air or Helium Fill</b>
<b>10" Crescent</b>	<b>Unvalved</b>	<b>Air Fill</b>
<b>17" Crescent</b>	<b>Valved</b>	<b>Air Fill</b>
<b>26" Crescent</b>	<b>Valved</b>	<b>Air or Helium Fill</b>
<b>35" Crescent</b>	<b>Valved</b>	<b>Air or Helium Fill</b>
<b>4" Heart</b>	<b>Unvalved</b>	<b>Air Fill</b>
<b>9" Heart</b>	<b>Unvalved</b>	<b>Air Fill</b>
<b>18" Heart</b>	<b>Valved</b>	<b>Air or Helium Fill</b>
<b>Jumbo Heart</b>	<b>Valved</b>	<b>Air or Helium Fill</b>
<b>4" Star</b>	<b>Unvalved</b>	<b>Air Fill</b>
<b>9" Star</b>	<b>Unvalved</b>	<b>Air Fill</b>
<b>19" Star</b>	<b>Valved</b>	<b>Air or Helium Fill</b>
<b>Jumbo Star</b>	<b>Valved</b>	<b>Air or Helium Fill</b>

\* Can be filled with helium if attached to other helium filled balloons in order to reduce weight, but will not float independently.

### How do they work?

The Decorator shapes connect together using simple techniques to create an almost unlimited combination of shapes and styles. The balloons have been specifically designed to pack together so that the internal curves of one balloon will fit around the external curves of another enabling the designer to create solid shapes as well as more open, stylish designs.

The balloons connect in three basic ways and, using simple techniques, they can create strong, large scale décor as well as smaller scale designs.

#### **1. Point to point or tail**

Whenever two or more balloons meet at their points or tails, they can be connected very strongly by overlapping the points (tails) a little and securing tightly with a small cable tie. Very large arches and swags can be created in this way.



1. When linking two or more balloons by their tips or their tails, use small cable ties. ●



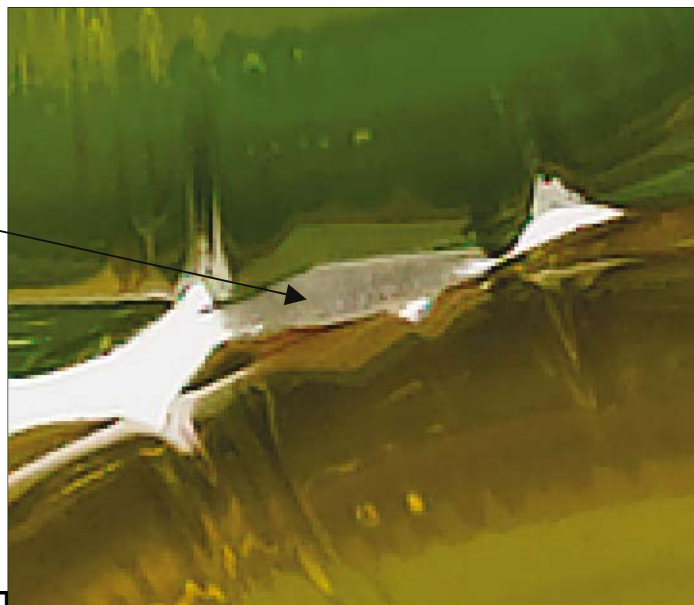
### 2. Point to edge (or face)

Wherever the point of one balloon meets the edge (or face) of another, the balloons can be connected either with a small piece of self adhesive Hook-and-Loop tape.

### 3. Edge (or Face) to Edge (or Face)

In all of these cases, the best method of connection is to use small pieces of self adhesive Hook-and-Loop tape.

2 & 3. When linking two balloons side to side (or tip/tail to side), use a small piece of self-adhesive hook-and-loop tape. ◆



● = CONNECT WITH CABLE TIE ◆ = CONNECT WITH HOOK AND LOOP TAPE



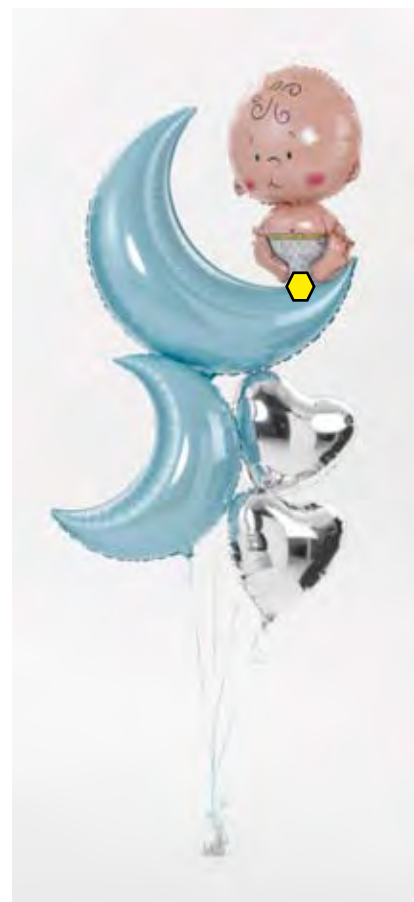
# Baby Boy

## Bringing life to Balloons



### MATERIALS REQUIRED:

- 1 x 35" Pastel Blue Crescent  
1635299
- 1 x 26" Pastel Blue Crescent  
1631299
- 2 x 18" Metallic Silver Hearts  
6540802
- 1 x Welcome Baby Supershapes  
1057602,15
- Weight  
Ribbon



### CONSTRUCTION:

● = CONNECT WITH CABLE TIE    ⬡ = CONNECT WITH HOOK AND LOOP TAPE

### MATERIALS REQUIRED:

1 x 35" Pastel Pink Crescent  
1646099  
4 x 18" Metallic Pearl Pastel  
Pink Hearts  
8004302,15  
1 x Welcome Baby Supershape  
6540802  
Weight  
Ribbon



### CONSTRUCTION:

● = CONNECT WITH CABLE TIE    ⬡ = CONNECT WITH HOOK AND LOOP TAPE



### MATERIALS REQUIRED:

- 1 x Wedding Dress Supershape 1590501
- 3 x 19" Silver Curves 1630199
- 3 x 9" Lilac Hearts 1667699
- 13 x 5" Soft Lavender Decorator Latex 990098 Weight

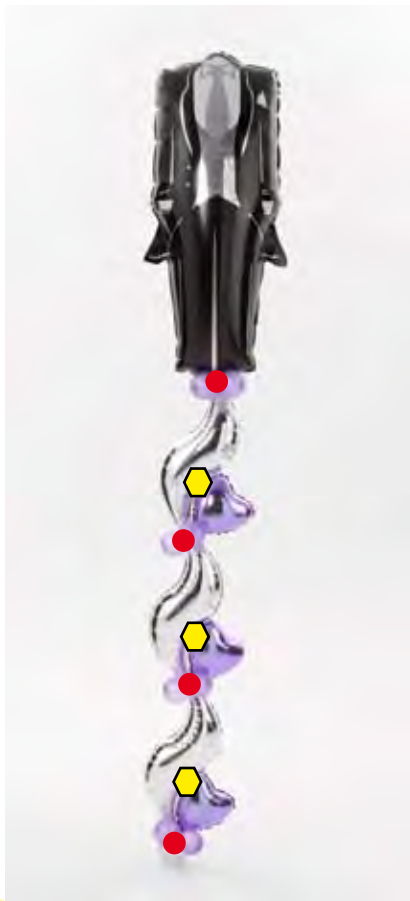


### CONSTRUCTION:

● = CONNECT WITH CABLE TIE    ⬡ = CONNECT WITH HOOK AND LOOP TAPE

### MATERIALS REQUIRED:

1 x Tuxedo Supershape  
1801501  
3 x 19" Silver Curves  
1630199  
3 x 9" Lilac Hearts  
1667699  
13 x 5" Soft Lavender  
Decorator Latex  
990098  
Weight



### CONSTRUCTION:

● = CONNECT WITH CABLE TIE    ⬡ = CONNECT WITH HOOK AND LOOP TAPE





### MATERIALS REQUIRED:

6 x 36" Holographic Curve

1625999

10 x 18" Gold Hearts

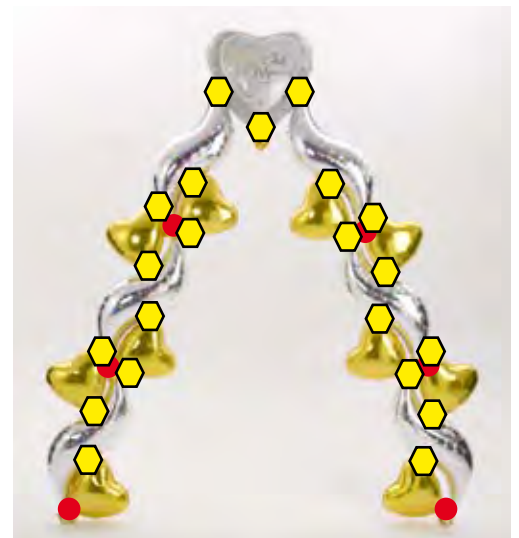
1058502,15

9 x 4" Gold Hearts

1611699

1 x Just Married Jumbo Heart 1138301

Weights



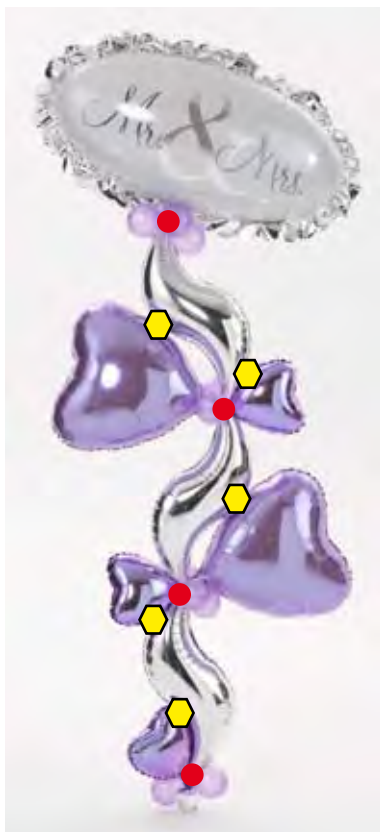
### CONSTRUCTION:

● = CONNECT WITH CABLE TIE    ⬡ = CONNECT WITH HOOK AND LOOP TAPE



## MATERIALS REQUIRED:

1 x Mr & Mrs Supershape  
 1791101,02  
 3 x 19" Silver Curves  
 1630199  
 3 x 9" Lilac Hearts  
 1667699  
 13 x 5" Soft Lavender  
 Decorator Latex  
 990098  
 2 x 18" Metallic Pastel Lilac  
 Hearts  
 1057102  
 Weight



Bringing life to Balloons

## CONSTRUCTION:

● = CONNECT WITH CABLE TIE    ⬡ = CONNECT WITH HOOK AND LOOP TAPE



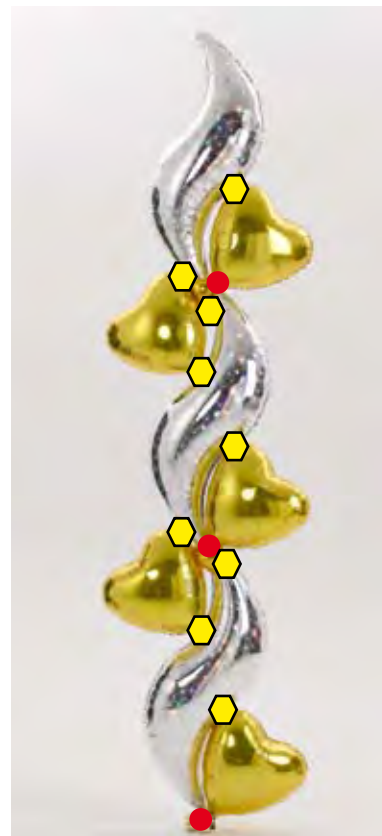
# Hearts & Curves Column

Bringing life to Balloons



## MATERIALS REQUIRED:

3 x 36" Holographic Curve  
1625999  
5 x 18" Gold Hearts  
1058502, 15  
4 x 4" Gold Hearts 1611699  
Weight



## CONSTRUCTION:

● = CONNECT WITH CABLE TIE    ⬡ = CONNECT WITH HOOK AND LOOP TAPE

### MATERIALS REQUIRED:

1 x 42" Fuchsia Curve  
1620499  
1 x 36" Holographic Curve  
1625999  
1 x 28" Fuchsia Curve  
1620299  
1 x 19" Holographic Curve  
1625499  
1 x 15" Fuchsia Curve  
1620099  
Weight



### CONSTRUCTION:

● = CONNECT WITH CABLE TIE    ⬡ = CONNECT WITH HOOK AND LOOP TAPE



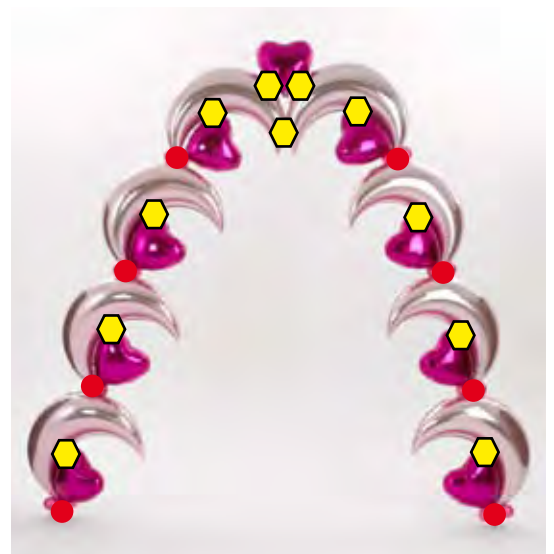
# Crescent & Heart Arch

Bringing life to Balloons



## MATERIALS REQUIRED:

8 x 35" Pink Crescents  
1646099  
9 x 18" Fuchsia Hearts  
1156602  
32 x 5" Fab Fuchsia Latex  
990059  
Weights



## CONSTRUCTION:

● = CONNECT WITH CABLE TIE    ⬡ = CONNECT WITH HOOK AND LOOP TAPE

# Crescent & Heart Arch #2

Bringing life to Balloons



## MATERIALS REQUIRED:

8 x 35" Pink Crescents  
1646099

9 x 18" Fuchsia Hearts  
1156602

32 x 5" Fab Fuchsia Latex  
990059  
Weights



## CONSTRUCTION:

● = CONNECT WITH CABLE TIE    ◆ = CONNECT WITH HOOK AND LOOP TAPE



# Holographic Wing

Bringing life to Balloons



## MATERIALS REQUIRED:

- 2 x 17" Holographic Crescents 1624399
- 2 x 10" Holographic Crescents 1624299
- 4 x 9" Holographic Hearts 1626699
- 1 x 18" Holographic Heart 1627402
- 1 x 19" holographic Star 1627602
- 2 x 26" Holographic Crescents 1624499
- 2 x 35" Holographic Crescents 1624599
- 2 x 42" Holographic Curves 1626199



## CONSTRUCTION:

● = CONNECT WITH CABLE TIE    ◆ = CONNECT WITH HOOK AND LOOP TAPE





### MATERIALS REQUIRED:

- 2 x 17" Holographic Crescents 1624399
- 2 x 10" Holographic Crescents 1624299
- 4 x 9" Holographic Hearts 1626699
- 1 x Jumbo Holographic Heart 1626799
- 2 x 26" Holographic Crescents 1624499
- 2 x 42" Holographic Curves 1626199
- 2 x 35" Holographic Crescents 1624599



### CONSTRUCTION:

● = CONNECT WITH CABLE TIE    ⬡ = CONNECT WITH HOOK AND LOOP TAPE

# Lilac Crescent 1

Bringing life to Balloons



## MATERIALS REQUIRED:

4 x 26" Lilac Crescents  
1665799  
4 x 18" Ivory Hearts  
1110702  
Weight



## CONSTRUCTION:

● = CONNECT WITH CABLE TIE    ◆ = CONNECT WITH HOOK AND LOOP TAPE

### MATERIALS REQUIRED:

4 x 26" Lilac Crescents  
1665799  
4 x 18" Ivory Hearts  
1110702  
Weight



### CONSTRUCTION:

● = CONNECT WITH CABLE TIE    ⬡ = CONNECT WITH HOOK AND LOOP TAPE



# Lilac Crescent 3

Bringing life to Balloons



## MATERIALS REQUIRED:

4 x 26" Lilac Crescents  
1665799  
4 x 18" Ivory Hearts  
1110702  
Weight



## CONSTRUCTION:

● = CONNECT WITH CABLE TIE    ⬡ = CONNECT WITH HOOK AND LOOP TAPE

### MATERIALS REQUIRED:

- 1 x 42" Gold Curve  
1614599
- 1 x 35" Lime Crescent  
1638999
- 1 x 26" Fuchsia Crescent  
1619899
- 1 x 17" Blue Crescent  
1622599
- 1 x 10" Purple Crescent  
1641699



### CONSTRUCTION:

● = CONNECT WITH CABLE TIE    ⬡ = CONNECT WITH HOOK AND LOOP TAPE

# Rainbow Double

Bringing life to Balloons



## MATERIALS REQUIRED:

2 x 17" Blue Crescents  
1622599  
2 x 10" Purple Crescents  
1641699  
4 x 4" Purple Stars  
1643299  
2 x 42" Gold Curves  
1614599  
2 x 26" Fuchsia Crescents  
1619899  
2 x 35" Lime Crescents  
1638999



## CONSTRUCTION:

● = CONNECT WITH CABLE TIE    ⬡ = CONNECT WITH HOOK AND LOOP TAPE



### MATERIALS REQUIRED:

- 1 x 42" Gold Curve  
1614599
- 1 x 35" Lime Crescent  
1638999
- 1 x 26" Fuchsia Crescent  
1619899
- 1 x 17" Blue Crescent  
1622599
- 1 x 10" Purple Crescent  
1641699



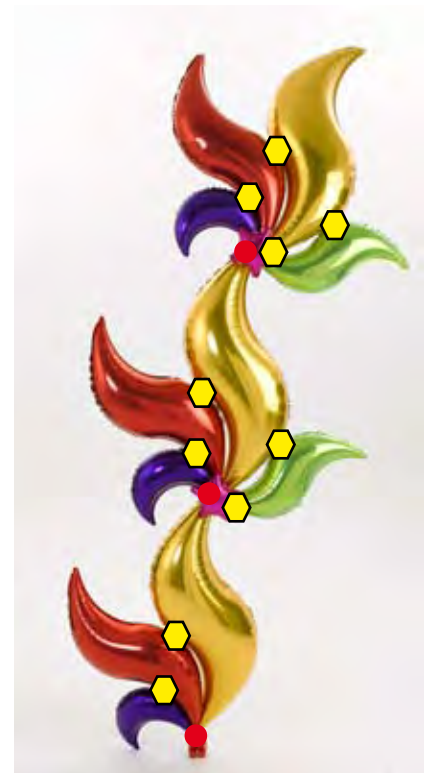
### CONSTRUCTION:

● = CONNECT WITH CABLE TIE    ⬡ = CONNECT WITH HOOK AND LOOP TAPE



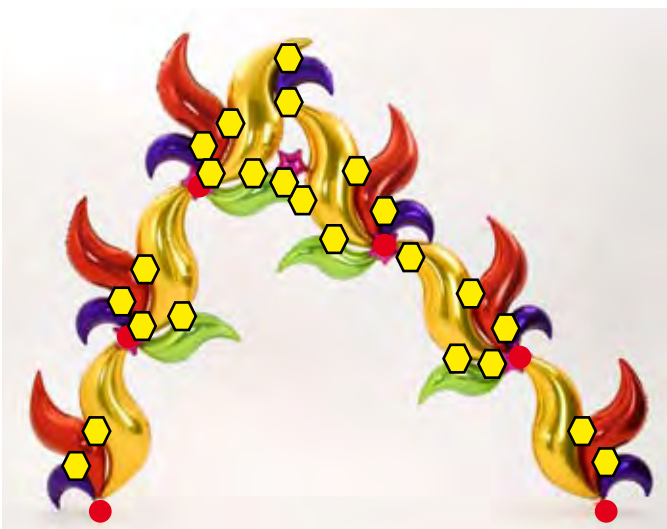
### MATERIALS REQUIRED:

- 3 x 42" Gold Curves  
1614599
- 3 x 36" Red Curves  
1668899
- 2 x 28" Lime Curves  
1639599
- 3 x 17" Blue Crescents  
1622599
- 4 x 9" Purple Stars  
1643699
- Weight



### CONSTRUCTION:

- = CONNECT WITH CABLE TIE
- ⬡ = CONNECT WITH HOOK AND LOOP TAPE



### MATERIALS REQUIRED:

6 x 42" Gold Curves  
1614599  
6 x 36" Red Curves  
1668899  
4 x 28" Lime Curves  
1639599  
7 x 17" Blue Crescents  
1622599  
9 x 9" Purple Stars  
1643699  
Weights

### CONSTRUCTION:

● = CONNECT WITH CABLE TIE    ◈ = CONNECT WITH HOOK AND LOOP TAPE



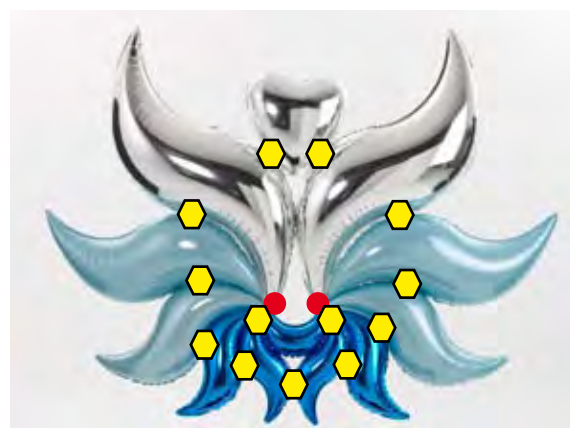
# Double Wing

Bringing life to Balloons



## MATERIALS REQUIRED:

2 x 42" Silver Curves  
1630499  
2 x 36" Pastel Blue Curves 1635699  
2 x 28" Pastel Blue Curves 1635599  
2 x 19" Blue Curves  
1622999  
2 x 15" Blue Curves  
1622899  
1 x 10" Blue Crescent  
1622499

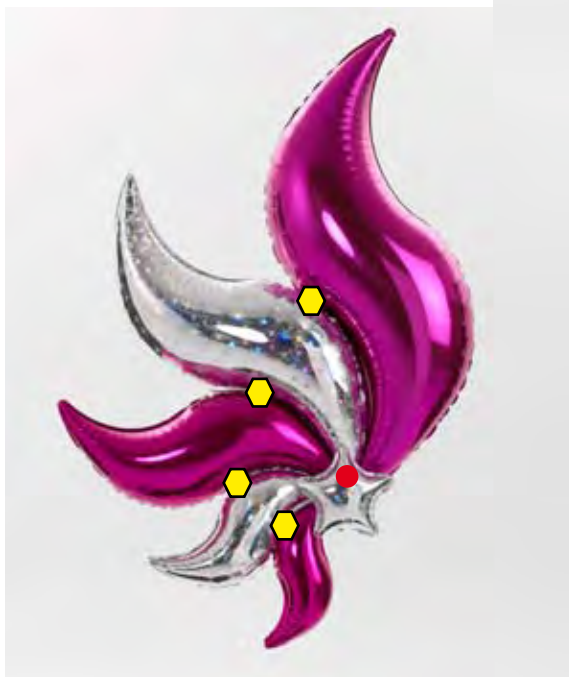


## CONSTRUCTION:

● = CONNECT WITH CABLE TIE    ⬡ = CONNECT WITH HOOK AND LOOP TAPE

**MATERIALS REQUIRED:**

1 x 42" Fuchsia Curve  
 1620499  
 1 x 36" Holographic Curve  
 1625999  
 1 x 28" Fuchsia Curve  
 1620299  
 1 x 19" Holographic Curve  
 1625499  
 1 x 15" Fuchsia Curve  
 1620099  
 2 x 9" Holographic Stars  
 1627099

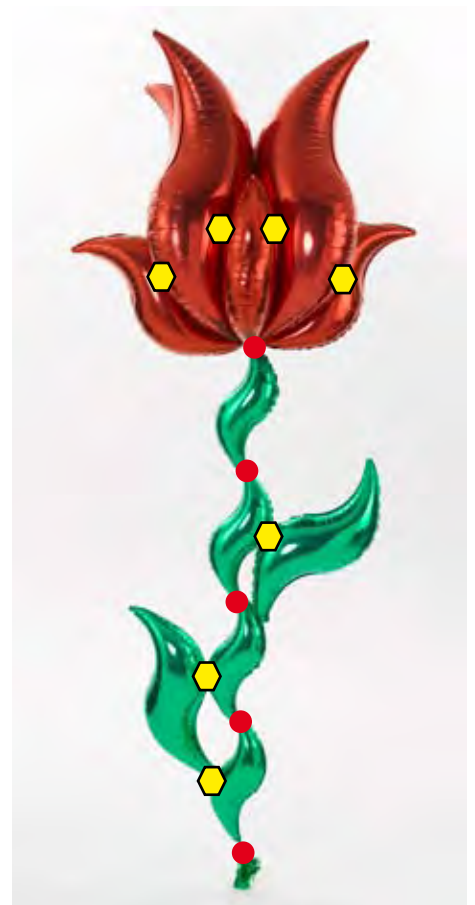
**CONSTRUCTION:**

● = CONNECT WITH CABLE TIE    ⬡ = CONNECT WITH HOOK AND LOOP TAPE



## MATERIALS REQUIRED:

- 4 x 42" Red Curves  
1668999
- 4 x 28" Red Curves  
1668799
- 2 x 28" Green Curves  
1669699
- 4 x 19" Green Curves  
1669599
- Weight



## CONSTRUCTION:

● = CONNECT WITH CABLE TIE    ⬡ = CONNECT WITH HOOK AND LOOP TAPE



**MATERIALS REQUIRED:**

2 x 42" Holographic Curves  
1614599

Supershape Numbers to suit  
Occasion and Colour Choice

18" Age Balloon to Suit  
Weight

**CONSTRUCTION:**

● = CONNECT WITH CABLE TIE    ⬡ = CONNECT WITH HOOK AND LOOP TAPE



### MATERIALS REQUIRED:

26" Crescents

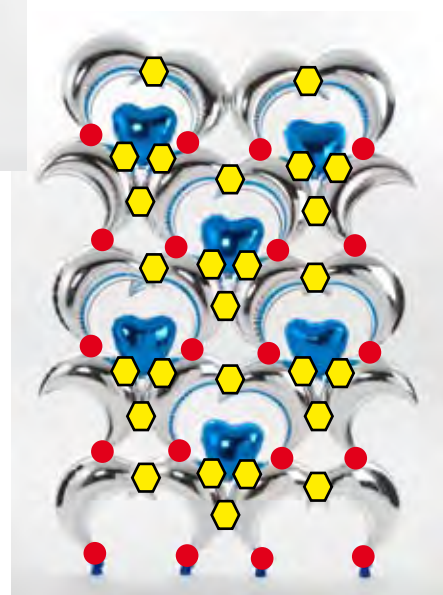
18" Hearts

Weights

Use enough of each of the above to create a screen large enough to cover the required area.

### CONSTRUCTION:

● = CONNECT WITH CABLE TIE    ◆ = CONNECT WITH HOOK AND LOOP TAPE







Chris Horne - Amscan 2009





bringing  
balloons  
to life

**amscan**<sup>®</sup>

AMSCAN INTERNATIONAL, LTD.

Brudenell Drive, Brinklow,

Milton Keynes MK10 0DA England

TEL: +44 (0)1908 288 500 FAX: +44 (0)1908 288 501

E-MAIL: [sales@amscan-uk.co.uk](mailto:sales@amscan-uk.co.uk) WEB: [www.amscan.co.uk](http://www.amscan.co.uk)